

All-Cause Mortality Data – 2015-2023

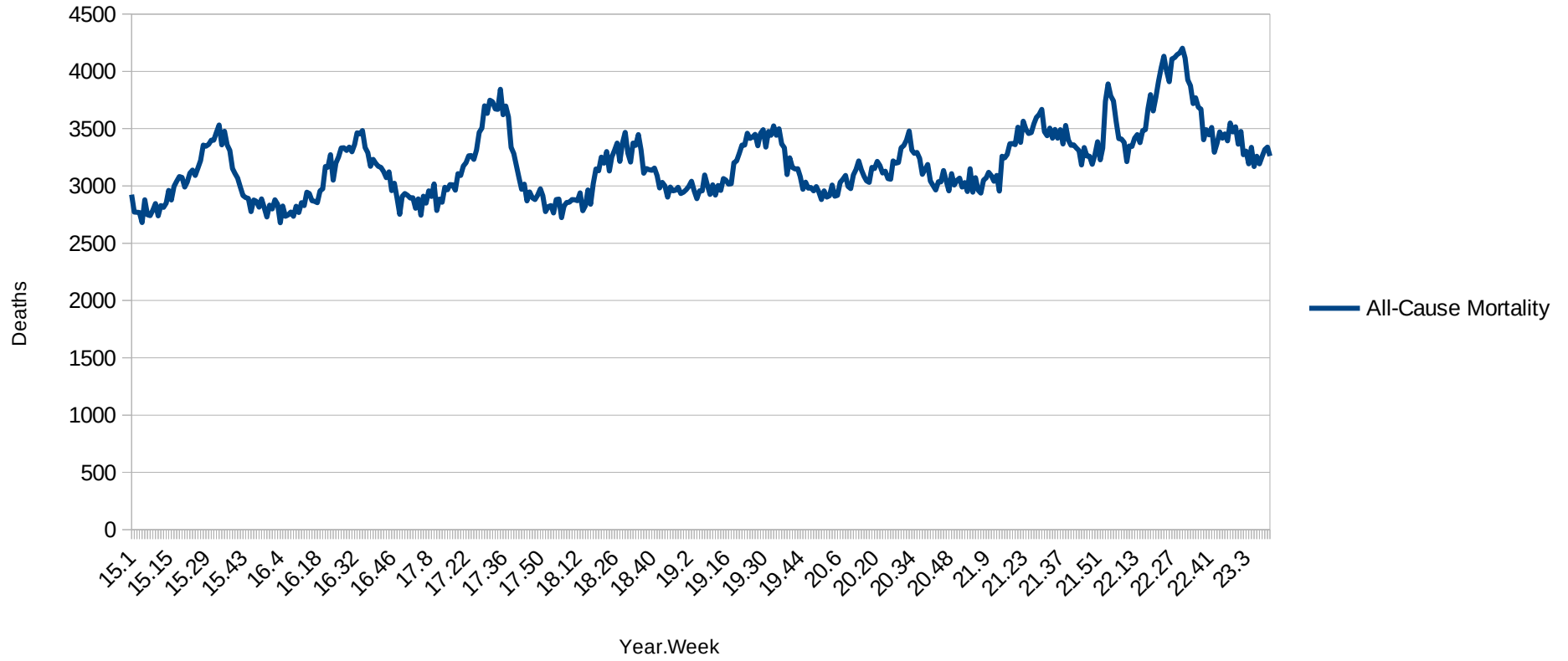
2015 – 157,446 ; 13,121/mth avg	12,237	11,172	12,439	12,602	13,488	13,415	14,754	15,260	14,114	13,300	12,197	12,468
2016 – 159,229 ; 13,269/mth avg	12,401	11,477	12,397	12,442	13,198	13,680	14,727	15,114	14,064	13,991	13,000	12,738
2017 – 164,356 ; 13,696/mth avg	12,690	11,528	12,755	12,831	13,662	13,945	15,849	16,479	15,432	13,817	12,555	12,813
2018 – 159,473 ; 13,289/mth avg	12,516	11,262	12,815	12,264	13,952	13,912	14,799	14,816	13,666	13,669	12,771	13,031
2019 – 164,814 ; 13,735/mth avg	13,192	11,971	13,176	12,993	14,185	14,658	15,183	15,286	14,269	14,010	12,845	13,046
2020 – 162,646 ; 13,554/mth avg	12,995	12,513	13,546	13,300	14,025	13,269	14,479	14,858	13,689	13,430	13,034	13,508
2021 – 171,976 ; 14,331/mth avg	13,368	12,022	13,624	13,574	15,035	14,876	15,903	15,395	14,759	14,966	14,032	14,422
2022 – 190,394 ; 15,866/mth avg	16,257	14,073	14,727	14,845	16,466	17,139	18,279	17,698	15,704	15,232	14,629	15,345

2023

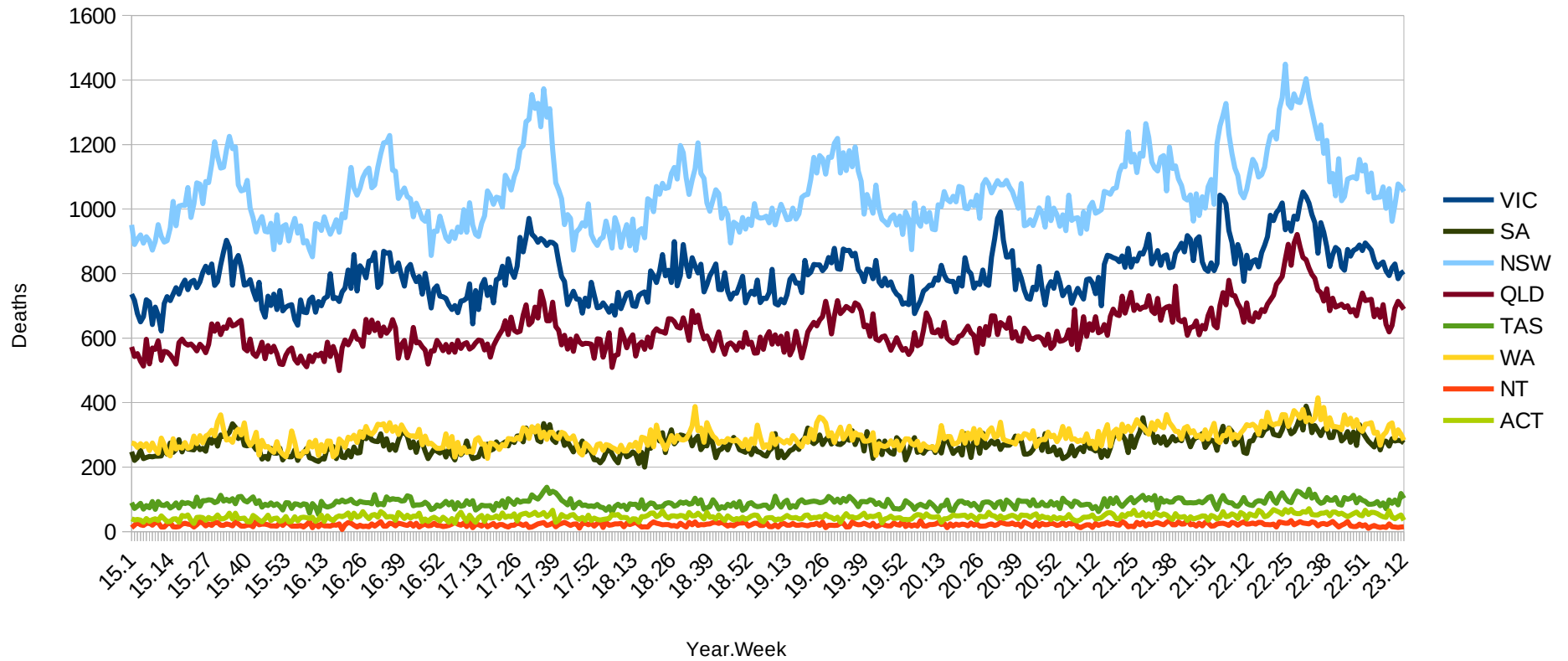
From 2015-22 "Updated" ABS Provisional Mortality Statistics released 28 Apr. 2023:

2015: 159,916 (3,017/wk)
2016: 158,454 (3,047/wk)
2017: 163,928 (3,152/wk)
2018: 159,084 (3,059/wk)
2019: 164,388 (3,161/wk)
2020: 164,778 (3,109/wk)
2021: 171,718 (3,302/wk)
2022: 190,326 (3,660/wk)
2023 YTD: 39,381 (3,282/wk)

Australian Weekly All-Cause Mortality 2015-2023



Australian Weekly All-Cause Mortality by State/Territory 2015-2023



Australian Weekly All-Cause Mortality by Age 2015-2023

